

# ***SFP*<sup>2</sup> : Evaluation of Allsky Single Footprint retrievals using Artificial Intelligence methods and Optimal Estimation methods**

---

Sergio DeSouza-Machado<sup>1</sup>, Eric Maddy<sup>2</sup>, Ruben Delgado<sup>3</sup>

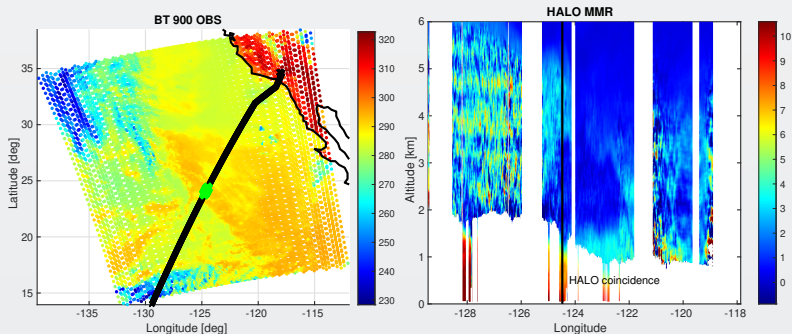
September 24-27, 2024

<sup>1</sup>UMBC JCET

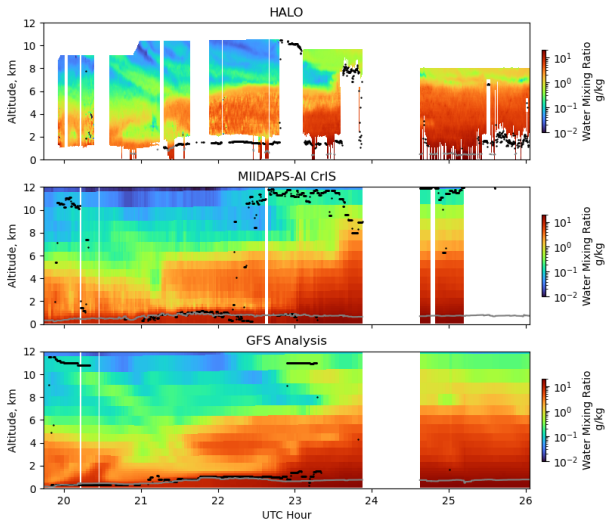
<sup>2</sup>Riverside technology

<sup>3</sup>Hampton University

Worked with  $d/dz$  (and  $d/dp$ !!!) RH, WVgg, Tvirtual, T  
Code finds max (or min) derivative closes to ground  
Black is HALO track, green is JPSS/HALO coincidence



# HALO 2019/04/25 vs AI



# 2019/04/25 g214 : Comparing PBLH [km] for ECM and AI

