

***SFP*² : Evaluation of Allsky Single Footprint retrievals using Artificial Intelligence methods and Optimal Estimation methods**

Sergio DeSouza-Machado¹, Eric Maddy², Ruben Delgado³

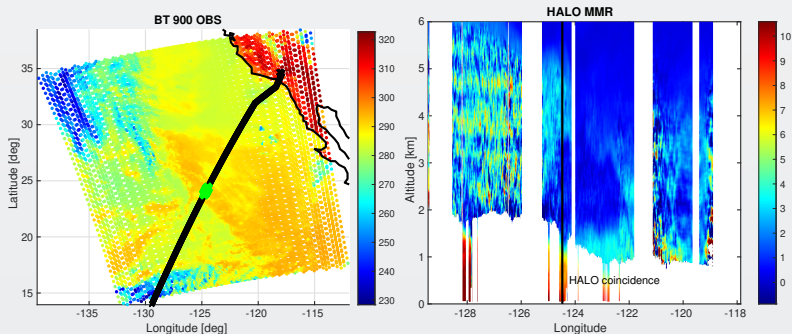
September 24-27, 2024

¹UMBC JCET

²Riverside technology

³Hampton University

Worked with d/dz (and d/dp !!!) RH, WVgg, Tvirtual, T
Code finds max (or min) derivative closes to ground
Black is HALO track, green is JPSS/HALO coincidence



2019/04/25 g214 : Comparing PBLH [km] for ECM and AI

